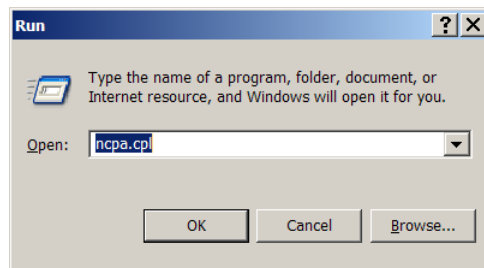


## WINDOWS XP SP3 WPA2 CONFIGURATION GUIDE

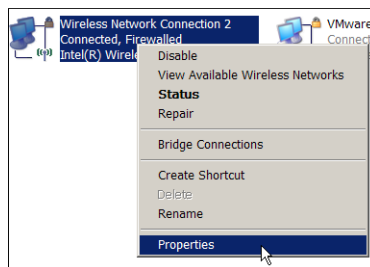
**THIS CONFIGURATION IS FOR THE BUILT IN WIRELESS CLIENT. IF YOU ARE USING A DIFFERENT CLIENT, EITHER DISABLE IT OR CONFIGURE IT USING THE INSTRUCTIONS SPECIFIED BY THE RESPECTIVE MANUFACTURER.**

### Manual Configuration

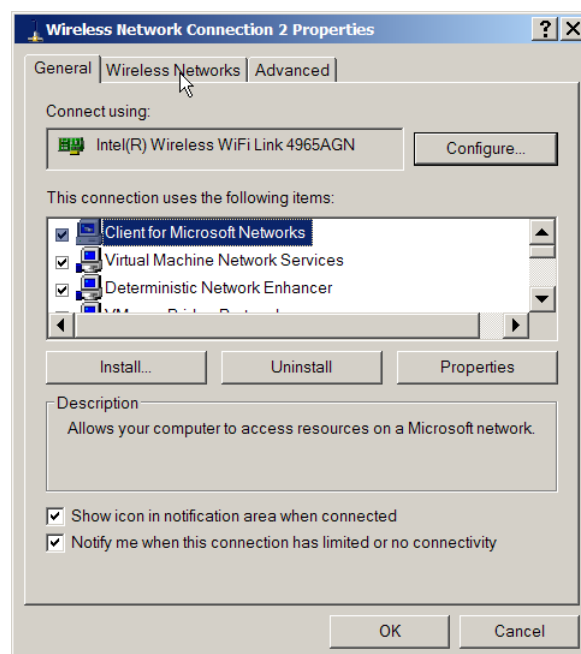
1. Click START>Run. At the Open: prompt type ncpa.cpl and select OK.



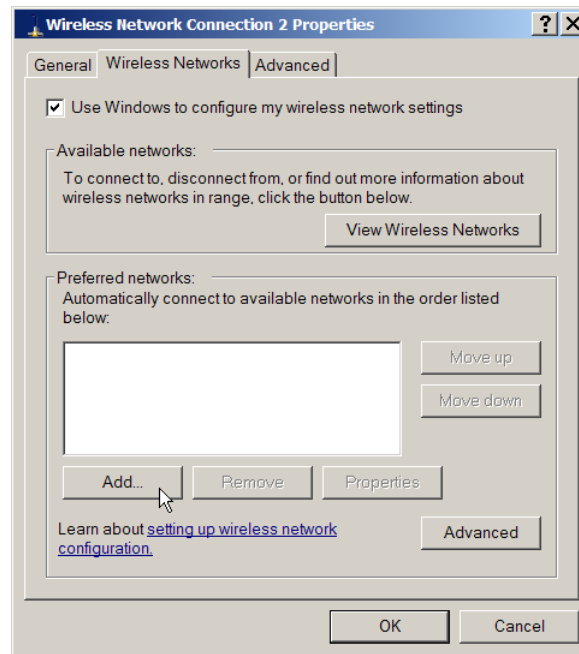
2. This will open the Network Connections window. In the Network Connections window, right click on the wireless connection and select Properties



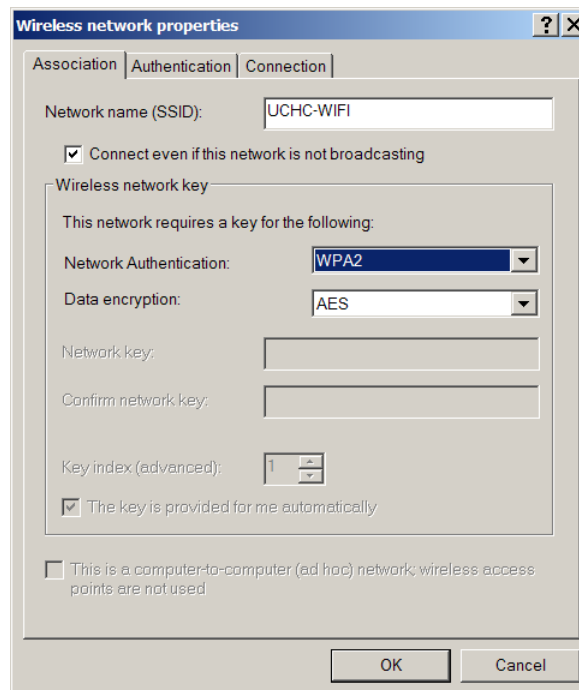
3. Select the Wireless Network tab



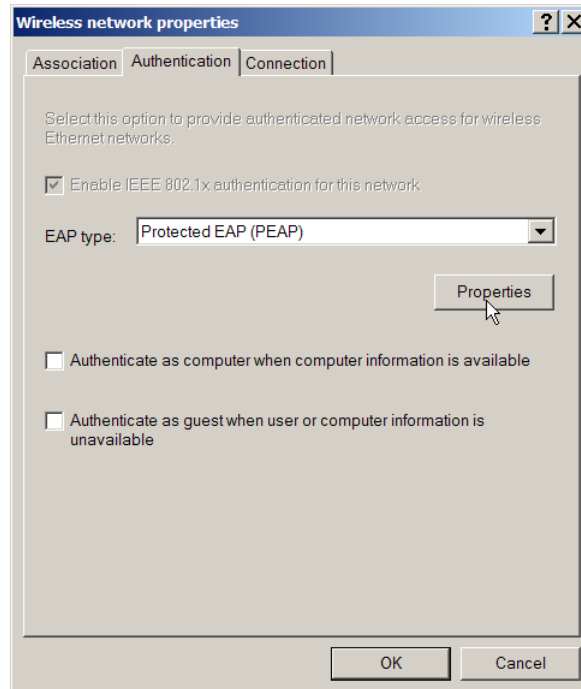
4. Click Add



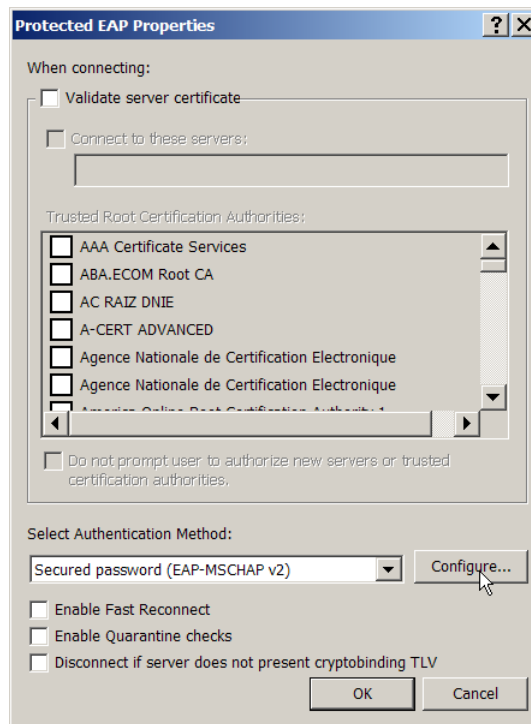
5. Enter the following information in the appropriate fields: **SSID: UCHC-WIFI** **Network Authentication: WPA2** **Data Encryption: AES**



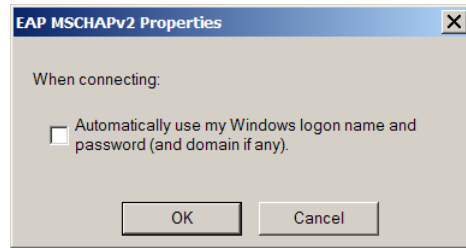
6. Select the Authentication Tab. EAP type is Protected EAP (PEAP). Clear both check boxes then click Properties



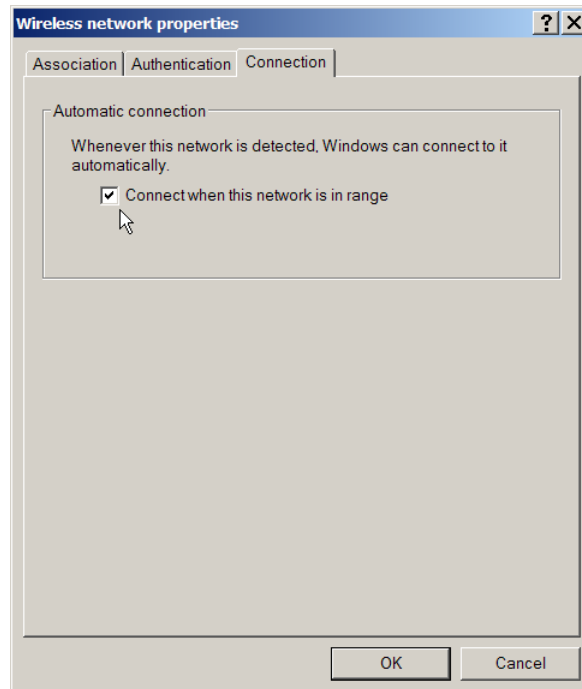
7. Uncheck Validate Server Certificate. Authentication Method is Secured Password. Click Configure



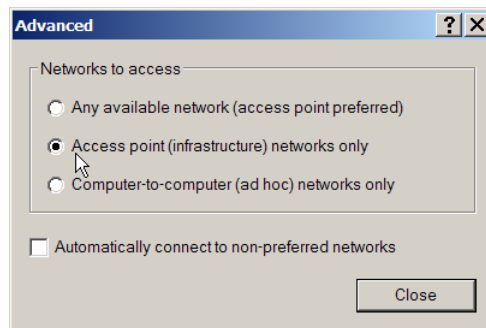
8. Clear the *Automatically use my Windows Logon* check box. Click OK.



9. On the Connection tab, make sure the *Connect when this network is in range* box is checked. Select OK.



10. On the Wireless Network Connection Properties screen click Advanced. Select the *Access point networks only* radio button. Select Close.



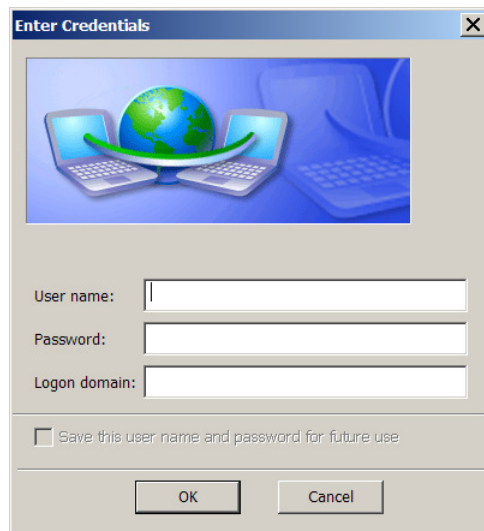
11. Close the Network Connections screen.

This completes the UCHC-WIFI wireless network configuration.

### To Connect to UCHC-WIFI:

When you are in range of the UCHC-WIFI network, window will show a notification in the lower right hand corner. The balloon will read: *"Click here to select a certificate or other credentials for connection to the network UCHC-WIFI"*

Once you click on it, a window prompting you for your network credentials will come up. Enter your network username and password. The domain name is UCHC.



The screenshot shows a standard Windows-style dialog box titled "Enter Credentials". The background of the dialog is blue and features an illustration of a globe with two laptops, symbolizing network connectivity. Below the illustration, there are three text input fields. The first is labeled "User name:", the second "Password:", and the third "Logon domain:". Below these fields is a checkbox with the text "Save this user name and password for future use". At the bottom of the dialog, there are two buttons: "OK" and "Cancel".

**If you have any questions regarding this installation, please contact the UCHC IT Helpdesk at extension 4400 or at 860-679-4400 from an outside line.**